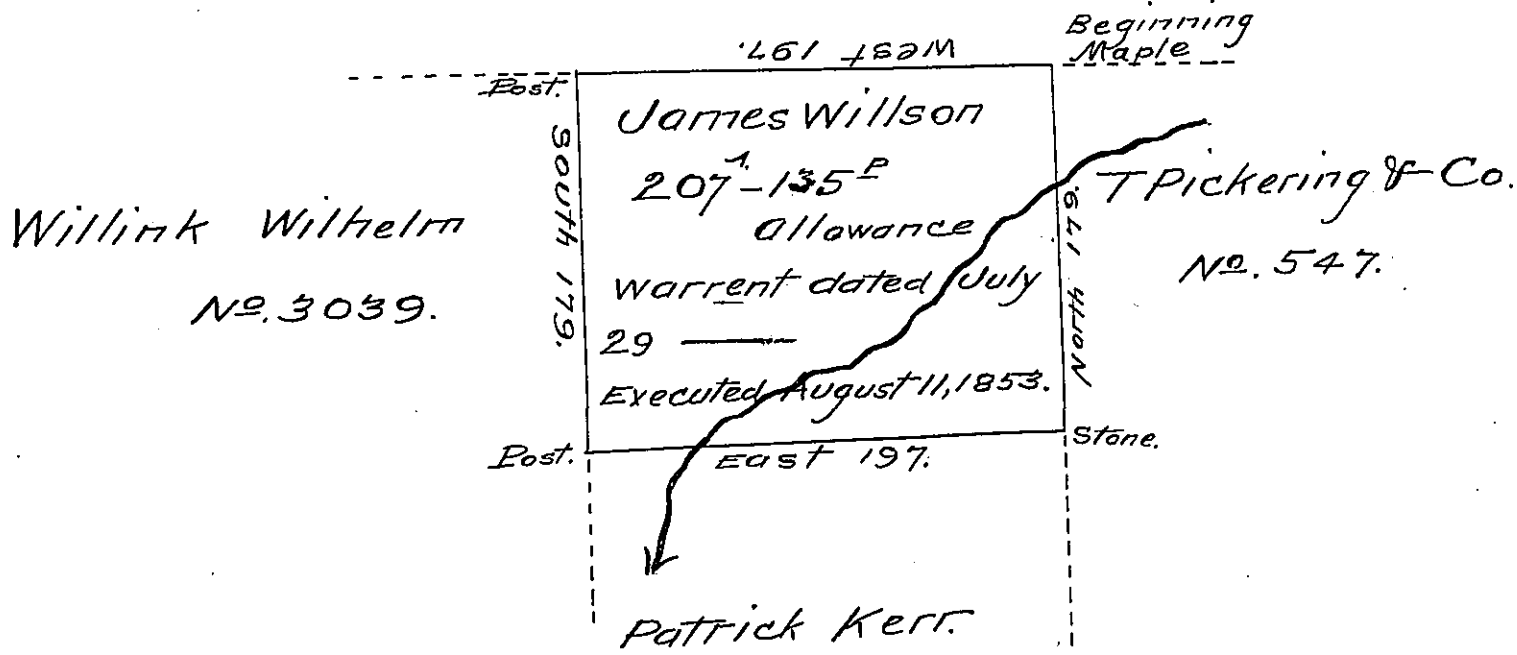


John Nichellson  
No 4018.



Surveyed the Above Tract of for James Willson of Warsaw Township Jefferson County By virtue of a Warrant to him Granted By this Commonwealth for Two Hundred Acres of Land situated in Warsaw Township on the North side of the North Branch of Sandy Lick Creek Bounded as follows Beginning at Maple Corner of T. Pickering & Co. then west 197 peches to post then south 179 peches to a post then East 197 pches to stone then North 179 peches to Maple the place of Beging Contain- ing 207<sup>A</sup> 135<sup>P</sup> and allowance —

Warrant dated July 29<sup>th</sup> 1853 }  
Executed August 11<sup>th</sup> 1853 }

By James Moorhead  
C.S. Surveyor for  
Jefferson County.

IN TESTIMONY that the above is a copy of the original remaining on file in the Department of Internal Affairs of Pennsylvania, made conformably to an Act of Assembly approved the 16th day of February 1833, I have hereunto set my hand and caused the Seal of said Department to be affixed at Harrisburg, this Twenty-sixth day of July 1907.

*Henry Howell*  
Secretary of Internal Affairs.